

# THE HOLIDAYS COLLECTION



## Kangaroo Valley

4 2 2

Trinity Creek is located in a quiet, secluded pocket of Beaumont - at the southern end of Kangaroo Valley.

It is a true oasis of water, wildlife, green pastures and beautiful trees - yet is only 15km from Nowra, 20km from Berry, 5km from Kangaroo Valley town, a short drive to over 100 South Coast beaches, and 2.5 hours from Sydney!

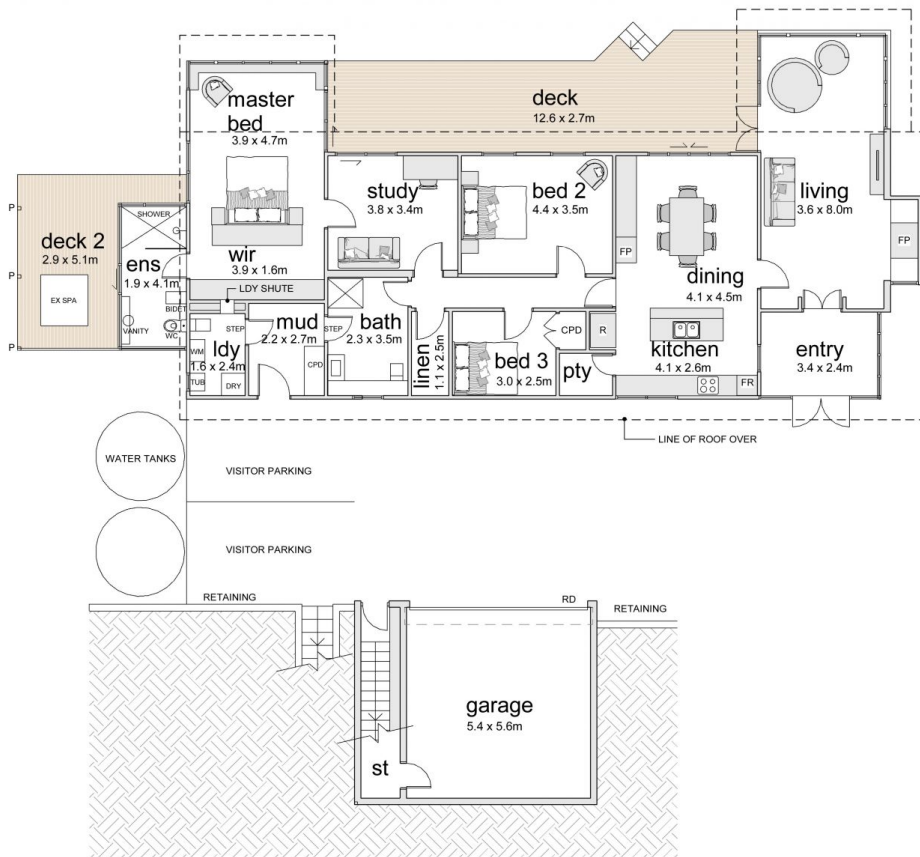
A key feature of this property is its excellent water supply. It has 3 pristine creeks (Harpers, Sawyers and Jilliby Creeks), a dam and an extensive system of pipes and water tanks that gravity feeds the house and 18 paddock troughs.

The 3 bedroom + large studio house is perfectly situated amongst beautiful gardens with a perfect north-facing

**Land Size** : 106 Acres

**View** : <https://www.sales.holidayscollection.com.au/sale/nsw/shoalhaven/kangaroo-valley/residential/acreagesemirural/5717847>

<https://www.sales.holidayscollection.com.au>



first floor - studio

