

# THE HOLIDAYS COLLECTION



## 37 Tulip Street Hyams Beach NSW

2  1  2 

37 Tulip presents a rare opportunity to buy an original cottage in Hyams Beach!

The house could either be refurbished to make it a quintessential "beach shack", or one could rebuild entirely and take full advantage of the elevated location to capture fantastic views of Jervis Bay.

The high side of Tulip Street is increasingly sought after as a well designed house can buffer the peak period crowds, will capture beautiful views, and has the Jervis Bay National Park at its rear.

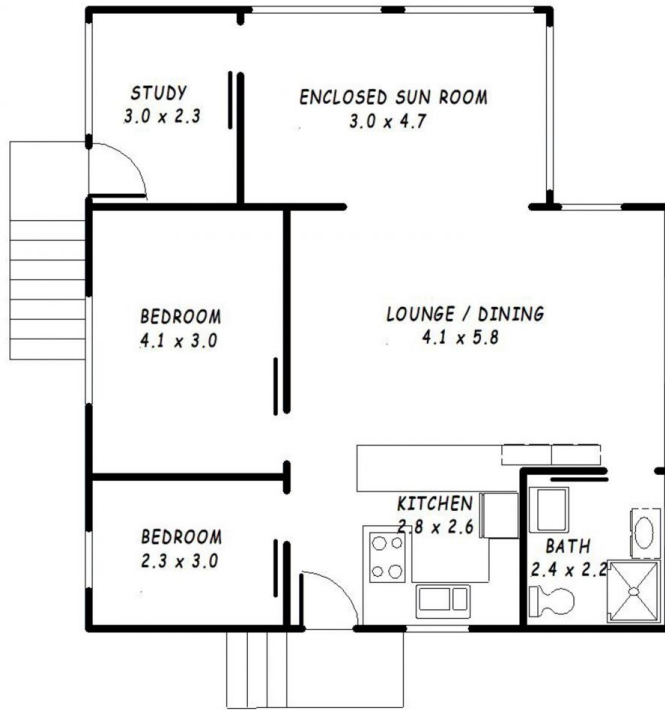
The current cottage is very much in its original style, with original bathroom, partially renovated kitchen, and a very handy workshop area underneath. The set back is 6m as opposed to the normal 7.5m set back. One may be able to

**Price** : \$ 1,115,000  
**Land Size** : 808 sqm  
**View** : <https://www.sales.holidayscollection.com.au/sale/nsw/shoalhaven/hyams-beach/residential/house/5717860>

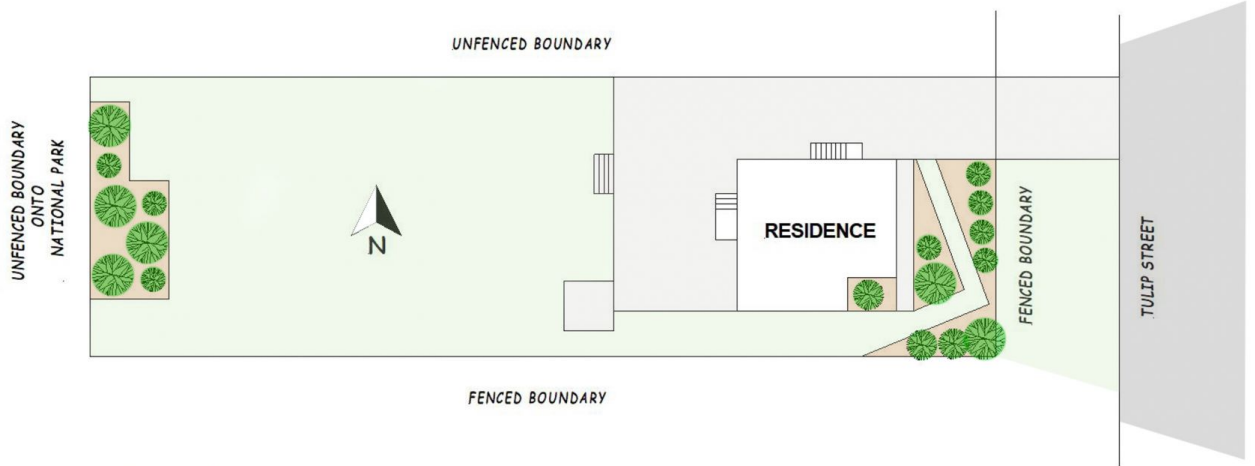


**Craig McIntosh**  
02 44430242

<https://www.sales.holidayscollection.com.au>



**37 TULIP STREET  
HYAMS BEACH**



BLOCK DIMENSIONS  
17.680 x 45.720  
808.32 sq m

**SITE PLAN  
37 TULIP STREET HYAMS BEACH**