

THE HOLIDAYS COLLECTION



1 Illowra Lane Hyams Beach NSW

4 2 2

1 Illowra Lane is an architect designed, custom built home and this will be immediately apparent when you inspect the property. The house has fantastic views of Jervis Bay from many rooms, double living areas, good sized bedrooms (all with built ins) and many other features that show the hand of an architect designing in sympathy with the setting!

The home has 4 bedrooms in total: three bedrooms upstairs including the master, and a self contained bedroom with adjacent living room downstairs. The rest of the layout is best seen on the floor plan provided, but the house draws in lovely naturally light, has plenty of storage, and a good sized double garage.

The current owner has low maintenance gardens, but the soil in the area lends itself to recreating lawns and more plantings if that is what you prefer!

Price : \$ 1,375,000
Land Size : 864 sqm
View : <https://www.sales.holidayscollection.com.au/sale/nsw/shoalhaven/hyams-beach/residential/house/5717862>



Craig McIntosh
02 44430242



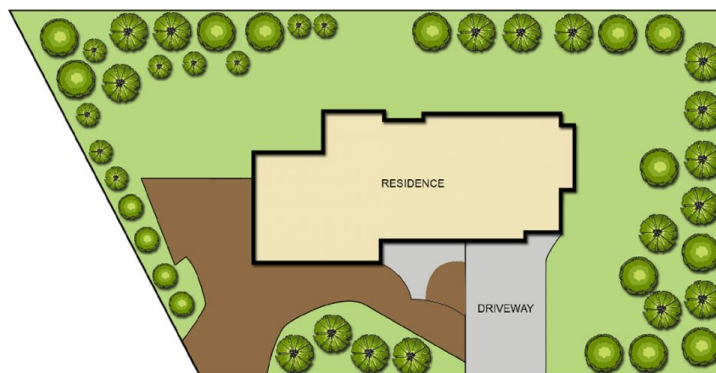
FIRST FLOOR PLAN



GROUND FLOOR PLAN

Floor plan, furniture, and fixture measurements and dimensions are approximate and are for illustrative purposes only.
No guarantee, warranty or representation as to the accuracy and completeness of the floor plan is given.

1 Illowra Lane, Hyams Beach



SITE PLAN

Site measurements and dimensions are approximate and are for illustrative purposes only.
No guarantee, warranty or representation as to the accuracy and completeness of the site plan is given.

1 Illowra Lane, Hyams Beach